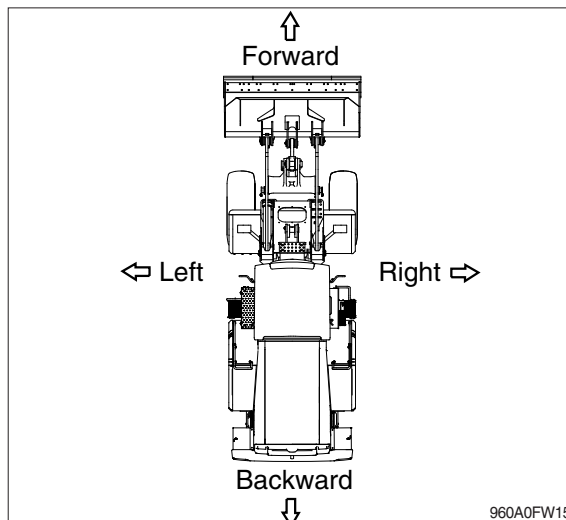


## GUIDE

### 1. DIRECTION

The direction of this manual indicates forward, backward, right, and left when the machine is in the traveling direction.

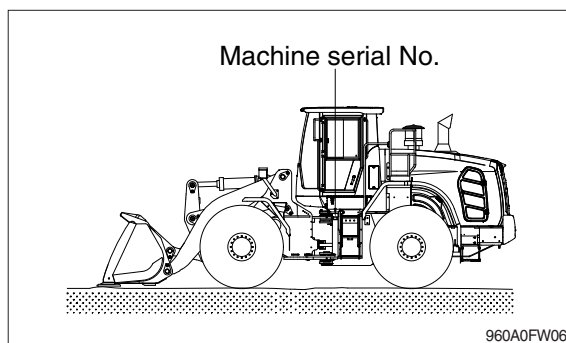


### 2. SERIAL NUMBER

Inform following when you order parts or the machine is out of order.

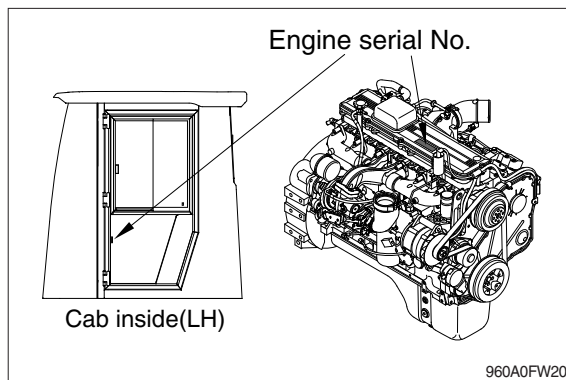
#### 1) MACHINE SERIAL NUMBER

The numbers are located on the left side of the rear frame.



#### 2) ENGINE SERIAL NUMBER

The numbers are located on the engine nameplate.



### 3. INTENDED USE

This machine is designed to be used mainly for the following work.

- Excavating work    - Leveling work    - Loading work    - Transporting work

※ Please refer to section 4 (efficient working method) further details.

### 4. SYMBOLS

▲ This Danger label indicates a high level of risk. Neglecting the warning may result in serious injury or death.

△ This Warning label indicates a medium level of risk. Neglecting the warning may result in serious injury or death.

※ This label indicate useful information for the operator.